

Burlington Road
Swanage, BH19 1LR



£900 PCM



Burlington Road

Swanage, BH19 1LR

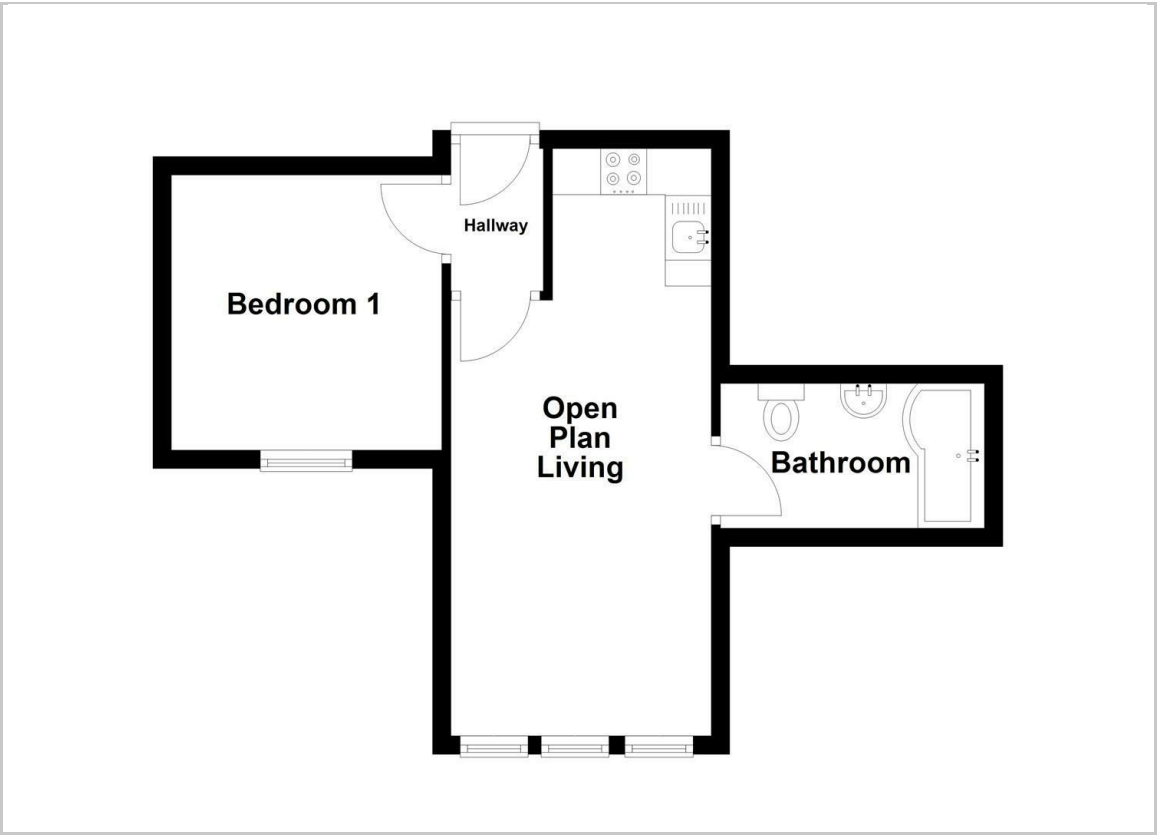
- One Bedroom Apartment
- Open Plan Living
- Bright And Airy
- Double Bedroom
- Ground Floor
- Parking Available
- Short Stroll To The Beach
- Built In Wardrobes
- Modern Kitchen And Bathroom
- Close To Bus Route



Nestled on Burlington Road in the charming town of Swanage, this beautifully presented GROUND FLOOR apartment is an ideal property for those seeking a coastal lifestyle. The property boasts OPEN PLAN living area that seamlessly combines comfort and functionality. The stylish, modern kitchen features integrated appliances. With triple aspect front windows, the living space is bathed in natural light, creating a warm and inviting atmosphere.

The apartment comprises one generously sized double bedroom, complete with modern built in wardrobes that provide ample storage. Adjacent to the living area, the bathroom offers a full suite including with shower over.

The apartment is conveniently situated within walking distance to the stunning beach, the vibrant town centre, and local bus routes, making it easy to explore the surrounding area. This apartment is perfectly suited for a single occupant or a couple looking for convenient living in Swanage.



Open Plan Living

9'3"ax x 20'11" max (2.83max x 6.38 max)

Hallway

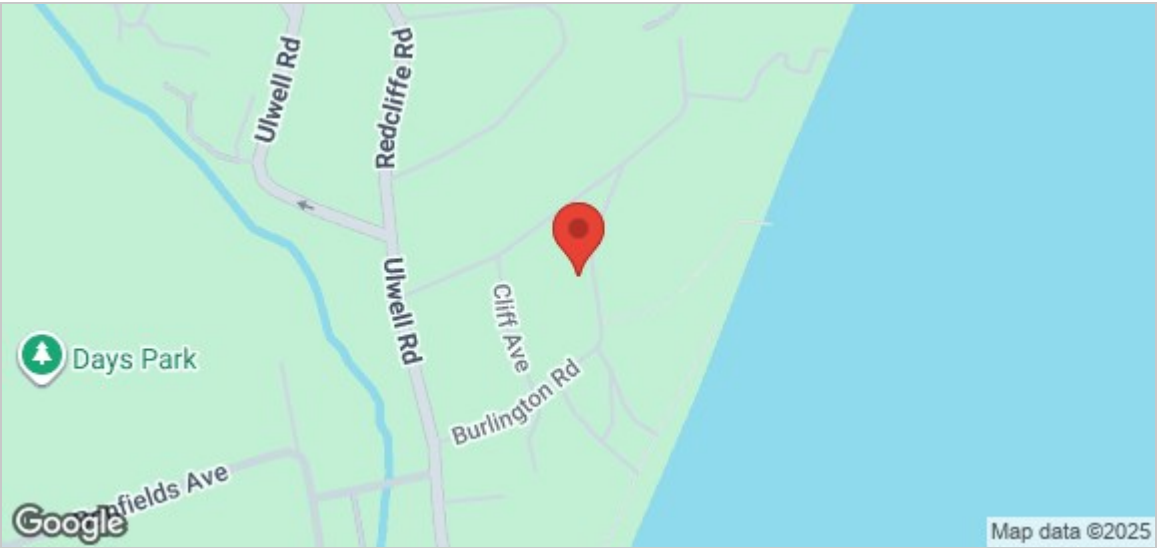
2'9" x 4'4" (0.84 x 1.34)

Bedroom

9'7" x 10'0" (2.94 x 3.07)

Bathroom

9'4" x 5'1" (2.87 x 1.57)



Energy Efficiency Rating		
	Current	Potential
Very energy efficient - lower running costs		
(92 plus) A		
(81-91) B		
(69-80) C		
(55-68) D		
(39-54) E		
(21-38) F		
(1-20) G		
Not energy efficient - higher running costs		
England & Wales		
EU Directive 2002/91/EC		

Environmental Impact (CO ₂) Rating		
	Current	Potential
Very environmentally friendly - lower CO ₂ emissions		
(82 plus) A		
(81-91) B		
(69-80) C		
(55-68) D		
(39-54) E		
(21-38) F		
(1-20) G		
Not environmentally friendly - higher CO ₂ emissions		
England & Wales		
EU Directive 2002/91/EC		